

Sky Mesh Group



Factory direct high quality wire mesh and filtration products

www.skymeshgroup.com
E-mail: info@skymeshgroup.com

Direct from factory, we serve high quality wire mesh and filtration products at economical pricing

11 Colmar Place, Suite #6, Dundas, ON, L9H4L1, Canada, Tel: 1 866 6750400 Fax: 905 6288140

Filter Cloth

We offer a full range of non-woven, woven and felted synthetic filter cloth including: woven constructions of monofilament, spun, multifilament, combination yarns and needle felts with various surface finishes. Weave designs, fibre choice and special finishing techniques are used to enhance the filtration and cake release characteristics of our materials.



Fiber Material

PA6, PA6.6, PA11, PP, PET

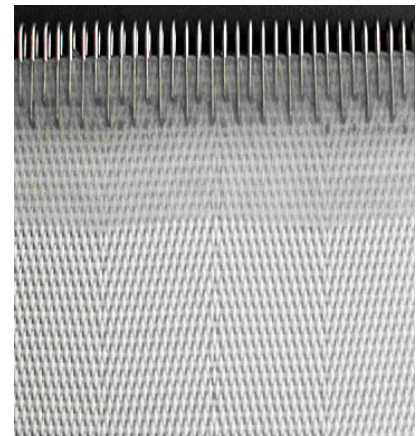
Benefits

high dimensional stability good
abrasion resistance clogging
prevention smooth surface
excellent cake release

Applications

belt filter
filter press
vacuum pan filter
leaf filter
rotary / horizontal disc filter
rotary drum vacuum filter
centrifuge filter

Monofilament Filter Cloth



Monofilament filter cloth is made from monofilament yarn. Benefit from its excellent performance, it has been widely used for industrial solid/liquid filtration.

Monofilament Filter Cloth

Model	Material	Weight (g/m ²)	Thickness (mm)	Air permeability (l/m ² .s)	Density (pcs/10cm)		Breaking strength (N/5x20cm)		Elongation		Weave
					Wrap	Weft	Wrap	Weft	Wrap	Weft	
PA58 15	PA6	540	0.85	818	788	228	5340	2258	28.7	24.6	twill
PA23 13	PA66	355	0.64	2873.28	482	191	3860	1630	35.4	25.5	Satin
PA51 33	PA6	590	1.00	619.40	914	319	7304	2550	37.8	26.5	double layer
PA53 18	PA6	395	0.79	1195.72	1070	295	5570	1870	35.4	24.4	
PA22 13	PA6	280	0.52	2268.36	409	240	3111	1825	25.8	24.2	
PA28 12	PA6	360	0.72	2204.48	492	185	3937	2165	31.3	24.4	
	PA6	360	0.65	2239.12	482	185	3858	2165	33.5	25.8	
PA	PA66	350	0.54	1143.16	472	236	3780	2456	33.5	25.6	

Polypropylene Filter Cloth



Model	Weight (g/m ²)	Thickness (mm)	Air permeability(l/m ² .s)	Density (pcs/10cm)		Breaking strength (N/5x20cm)		Elongation	
				Wrap	Weft	Wrap	Weft	Wrap	Weft
8005	308.74	0.61	19.30	173.2	102.4	3337.4	2759	41.63	30.9
8006	390.58	0.72	12.56	204.7	110.2	4356.7	2760	42.57	29
8007	443.10	0.75	13.29	236.2	108.3	4380.7	2776	42.87	26
8057	456.34	0.77	15.50	255.9	106.3	4400.7	2766	42.90	26.5
8008	462.53	0.78	13.11	271.7	94.5	4426.7	2406	41.53	26.9
8010	523.57	0.93	10.18	330.7	90.6	5825	2270	55.67	33.7
8507	462.04	0.84	42.52	248.0	137.8	4491.4	3933	50.63	34.07
8508	470.89	0.86	36.97	275.6	129.9	5258.2	4221	46.87	35.53
8509	517.51	0.98	27.23	307.1	131.9	5625	4870	54.67	34.8
5510	379.07	0.70	45.02	330.7	189.0	2600	2050	44.7	28.87
TPA	408	0.76	72.79	348.4	122.0	5168.2	5077.	5183	37.37
BB	668	1.13	44.15	582.7	110.2	10115	3030	35.03	30.57

Polyester Filter Cloth

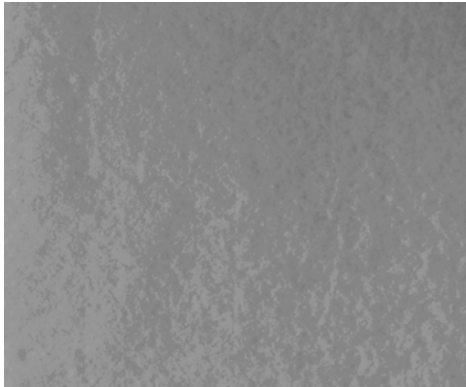
Technical Specifications (We can custom the products according to your specifications.)

Model	Weight (g/m ²)	Thickness (mm)	Air permeability(l/m ² .s)	Density (pcs/10cm)		Breaking strength (N/5x20cm)		Elongation	
				Wrap	Weft	Wrap	Weft	Wrap	Weft
120-7	627.6	1.42	53..9	256.4	212	4498	4044	36.3	27.5
734	245.9	0.62	316	231.6	168	2072	1633	25.6	23.2
747	248.2	0.53	107.9	226	159	2026	1485	35.6	20.5
758	330.5	0.73	55.4	194	134	2594	1909	44.2	21.3
3927	524.1	0.9	<20.7	152	102	4598	3154	46.8	24.8
208	410.8	1.43	68	271	286	2788	1930	39.1	29
729	310	0.72	119.2	300.8	202	3180.7	2157	23.1	21.2
740	324.6	0.71	126.7	306	206.2	3175.8	2184	23.5	21.3
120-7	627.6	1.42	53..9	256.4	212	4498	4044	36.3	27.5
734	245.9	0.62	316	231.6	168	2072	1633	25.6	23.2

Needle Felt

Needle felt is the main material of liquid filter bag and dust filter bag.

The fiber ranges include PET, PP, fiberglass, NOMEX, FMS, PPS, P84 and PTFE.



Model	Material	Weight (g/m ²)	Thick-ness (mm)	Air permea-bility (l/m ² .s)	Breaking Strength (N/5x20cm)		Elongation (%)		Working Temperature	
					Wrap	Weft	Wrap	Weft	Peak.	Cont.
PET felt	PET	500	1.8	200-350	1000	1100	<35	<40	120	150
PP felt	PP	600	2.2	100-200	1200	1800	<50	<55	90	110
Hydro & oleophobic felt	PET	500	2.0	150-300	1200	1300	<30	<45	120	150
Antistatic felt	PET Conductive fiber	500	1.8	200-350	900	1000	<35	<30	120	150
Easy-cleaning felt	PET	500	1.8	200-350	1300	1400	<35	<55	120	150
Acrylic felt	Acrylic	500	2.0	180-250	1200	1300	<20	<45	140	160
PTFE membrane felt	PET PTFE	500	1.8	30-60	1000	1100	<37	<35	130	160

Spunbonded Non-Woven Fabrics



Properties:

Material: PET, PP

The maximum width after cutting edge: 3200mm

The maximum roll diameter: 1500mm

Range of g/m²: 10 – 260g/m²

Color: on customer's request

ITEM NO.	BASIC WEIGHT(g/m ²)	THICKNESS (mm)	TENSILE STRENGTH (N/50mm)		ELONGATION (%)		THERMAL SHRINKAGE
			MD	CD	MD	CD	
PETSS 015	15	0.09	>30	>10	<18	<18	<2%
PETSS 020	20	0.12	>45	>20	<22	<22	<2%
PETSS 025	25	0.14	>70	>30	<23	<23	<2%
PETSS 030	30	0.16	>90	>45	<26	<25	<2%
PETSS 040	40	0.20	>110	>50	<27	<27	<2%
PETSS 050	50	0.24	>180	>55	<27	<29	<2%
PETSS 060	60	0.25	>210	>75	<25	<25	<2%
PETSS 070	70	0.29	>250	>88	<31	<31	<2%
PETSS 080	80	0.31	>270	>100	<30	<31	<2%
PETSS 100	100	0.32	>290	>102	<27	<30	<2%

Liquid Filtration and Dust Collector Filter Bag



Liquid Filter Bag

Liquid filter bags are widely used as the filter media in applications of liquid filtration. They are produced of fabrics, needle felts and nylon mesh in different fineness according to your filtration process. We can provide custom bags to meet your specific requirements. Our product lines mainly include: Felt Filter Bag and Mesh Filter Bag



Dust Collector Filter Bag

Dust collector filter bag provides a cost effective solution for many industrial operations. It is highly versatile and efficient in dust and fume collection.

We provide a wide variety of filter bags for use mainly in the following types of dust collectors: Pulse Jet Dust Collector, Reverse Air Dust Collector, Mechanical (Shaker) Dust Collector and Baghouse Dust Collector.



Mesh Filter Bag

Mesh filter bags are constructed with woven fabric. Whether your application requires a monofilament mesh that provides extra strength with no fiber migration, or a multifilament mesh designed for low-cost, disposable bags, we have your needs covered. Material available: nylon monofilament, polyester multifilament, polypropylene Monofilament. Micron rating: 10 to 1000; Collar type: steel ring, plastic ring or loop.

www.skymeshgroup.com E-mail: info@skymeshgroup.com

11 Colmar Place, Suite #6, Dundas, ON, L9H4L1, Canada, Tel: 1 866 6750400 Fax: 905 6288140