

# Sky Mesh Group



Factory direct high quality wire mesh and filtration products

**[www.skymeshgroup.com](http://www.skymeshgroup.com)**  
E-mail: [info@skymeshgroup.com](mailto:info@skymeshgroup.com)

*Direct from factory, we serve high quality wire mesh and filtration products at economical pricing*

---

11 Colmar Place, Suite #6, Dundas, ON, L9H4L1, Canada, Tel: 1 866 6750400 Fax: 905 6288140

# Sky Mesh Group

Factory direct high quality wire mesh and filtration products

## Contents

	Pages
<b>Wire Meshes and Filters</b>	
1. Stainless steel and brass wire mesh	1
2. Plain weave and twill weave wire mesh specifications	2
3. Plain Dutch weave wire mesh specifications	3
4. Twill Dutch weave wire mesh specifications	4
5. PVC coated, Teflon coated wire mesh	5
6. Filter leaves	6
7. Leave filter and candle filter models	7
8. Pleated filter elements	8
9. Pleated filter element specifications	9
10. Filter discs	10
11. Filter discs II	11
12. Plastic and Chemical industry filter packs and baskets	12
<b>Filter Fabrics</b>	
13 Filter cloth - Monofilament filter cloth	13
14 Polypropylene and polyester filter cloth	14
15 Needle felt filter cloth	15
16 Spunbonded Non-woven fabrics	16
17 Liquid filtration bag and dust collect bag	17

**[www.skymeshgroup.com](http://www.skymeshgroup.com)**  
E-mail: [info@skymeshgroup.com](mailto:info@skymeshgroup.com)

*Direct from factory, we serve high quality wire mesh and filtration products at economical pricing*

11 Colmar Place, Suite #6, Dundas, ON, L9H4L1, Canada, Tel: 1 866 6750400 Fax: 905 6288140

# Sky Mesh Group

Factory direct high quality wire mesh and filtration products

## Stainless Steel & Brass Wire Cloth

### Materials:

SUS302、304、304L、316、316L , brass wire, Phosphor bronze wire and copper wire.

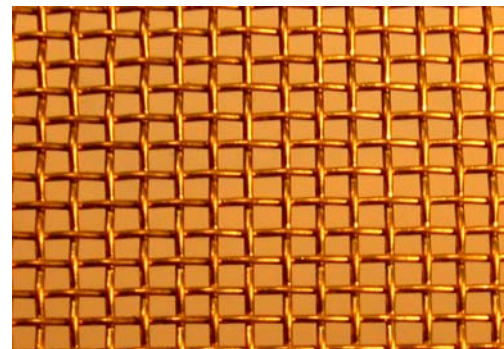
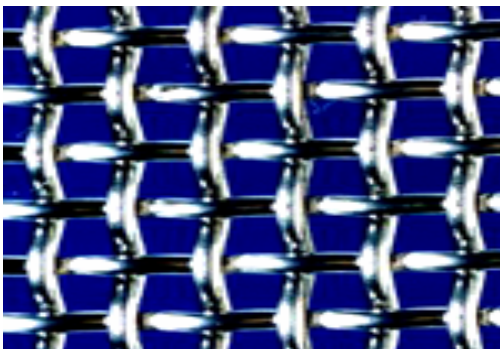
### Specifications:

Square opening series: from 1mesh to 1600mesh

Dutch woven series: from 12x62 to 400x2800 mesh

### Woven patterns:

Plain weave, Twilled weave, Plain Dutch weave, Twilled Dutch weave, Reverse Dutch weave

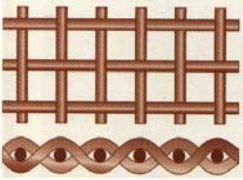


[www.skymeshgroup.com](http://www.skymeshgroup.com) E-mail: [info@skymeshgroup.com](mailto:info@skymeshgroup.com)

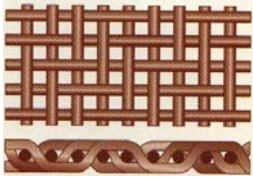
11 Colmar Place, Suite #6, Dundas, ON, L9H4L1, Canada, Tel: 1 866 6750400 Fax: 905 6288140

## Plain Weave/ Twill Weave

Mesh/Inch	Wire Diameter		Aperture		Open Area(%)	Weight( LB) /100 Square Foot
	Inch	MM	Inch	MM		
1x1	.080	2.03	.920	23.37	84.6	41.1
2X2	.063	1.60	.437	11.10	76.4	51.2
3X3	.054	1.37	.279	7.09	70.1	56.7
4X4	.063	1.60	.187	4.75	56.0	104.8
4X4	.047	1.19	.203	5.16	65.9	57.6
5X5	.041	1.04	.159	4.04	63.2	54.9
6X6	.035	.89	.132	3.35	62.7	48.1
8X8	.028	.71	.097	2.46	60.2	41.1
10X10	.025	.64	.075	1.91	56.3	41.2
10X10	.020	.51	.080	2.03	64.0	26.1
12X12	.023	.584	.060	1.52	51.8	42.2
12X12	.020	.508	.063	1.60	57.2	31.6
14X14	.023	.584	.048	1.22	45.2	49.8
14X14	.020	.508	.051	1.30	51.0	37.2
16X16	.018	.457	.0445	1.13	50.7	34.5
18X18	.017	.432	.0386	.98	48.3	34.8
20X20	.020	.508	.0300	.76	36.0	55.2
20X20	.016	.406	.0340	.86	46.2	34.4
24X24	.014	.356	.0277	.70	44.2	31.8
30X30	.013	.330	.0203	.52	37.1	34.8
30X30	.012	.305	.0213	.54	40.8	29.4
30X30	.009	.229	.0243	.62	53.1	16.1
35X35	.011	.279	.0176	.45	37.9	29.0
40X40	.010	.254	.0150	.38	36.0	27.6
50X50	.009	.229	.0110	.28	30.3	28.4
50X50	.008	.203	.0120	.31	36.0	22.1
60X60	.0075	.191	.0092	.23	30.5	23.7
60X60	.007	.178	.0097	.25	33.9	20.4
70X70	.0065	.165	.0078	.20	29.8	20.8
80X80	.0065	.165	.0060	.15	23.0	23.2
80X80	.0055	.140	.0070	.18	31.4	16.9
90X90	.005	.127	.0061	.16	30.1	15.8
100X100	.0045	.114	.0055	.14	30.3	14.2
100X100	.004	.102	.0060	.15	36.0	11.0
100X100	.0035	.089	.0065	.17	42.3	8.3
110X110	.0040	.1016	.0051	.1295	30.7	12.4
120X120	.0037	.0940	.0064	.1168	30.7	11.6
150X150	.0026	.0660	.0041	.1041	37.4	7.1
160X160	.0025	.0635	.0038	.0965	36.4	5.94
180X180	.0023	.0584	.0033	.0838	34.7	6.7
200X200	.0021	.0533	.0029	.0737	33.6	6.2
250X250	.0016	.0406	.0024	.0610	36.0	4.4
270X270	.0016	.0406	.0021	.0533	32.2	4.7
300X300	.0051	.0381	.0018	.0457	29.7	3.04
325X325	.0014	.0356	.0017	.0432	30.0	4.40
400X400	.0010	.0254	.0015	.370	36.0	3.3
500X500	.0010	.0254	.0010	.0254	25.0	3.8



**Plain Square - The most common weave, with the same diameter warp and shute wires woven in a simple over and under pattern. It produces screen with the same mesh count in both directions.**

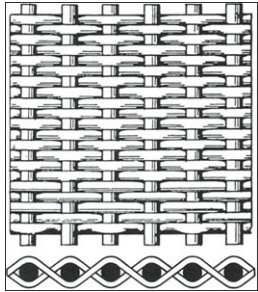


**Twill Square - Each shute wire typically passes over two warp wires and under two, producing square openings. Twill weave can Be made from larger diameter wires than would be possible in plain square weave to obtain greater strength, density, or corrosion resistance.**

# Sky Mesh Group

Factory direct high quality wire mesh and filtration products

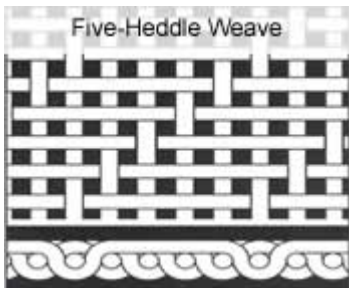
## Dutch Weave Patterns



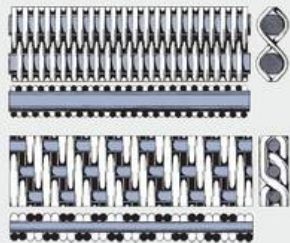
Plain Dutch Weave Pattern

Plain Dutch - Woven in an over and under pattern, but warp wires are heavier -- larger in diameter -- than shute wires which are driven very close to create a high density wire mesh with much lower flow rates and much higher particle retention than plain square weaves.

Stainless Steel Dutch Plain Weave					
Mesh (inch)	Wire dia× Wire dia(mm)	Opening (μm)	Efficient section rate(%)	Weight (kg/m <sup>2</sup> )	Mesh thickness (mm)
10×50	0.60×0.55	400	20.4	4.70	1.63
12×64	0.58×0.43	350	16.0	4.00	1.59
14×80	0.45×0.35	250	14.3	3.40	1.13
24×110	0.35×0.25	220	11.3	2.62	0.85
20×120	0.27×0.22	150	15.5	2.20	0.69
28×140	0.27×0.20	125	15.2	1.98	0.66
30×150	0.25×0.18	117	13.5	1.79	0.61
36×180	0.224×0.14	74	16.8	1.47	0.504
40×200	0.18×0.14	84	15.4	1.30	0.45
50×250	0.14×0.113	74	15.2	1.15	0.36
60×300	0.16×0.095	69	14.1	1.06	0.36
70×350	0.125×0.08	35	13.2	0.86	0.285
70×400	0.15×0.071	42	19.1	0.78	0.267
80×400	0.12×0.07	64	16.6	0.78	0.27
80×500	0.12×0.055	58	18.2	0.67	0.24
80×600	0.1×0.05	46	23.2	0.57	0.21
80×700	0.125×0.04	40	38.1	0.60	0.205
100×800	0.063×0.036	23	21.5	0.38	0.135
100×1200	0.063×0.023	23	37.6	0.27	0.109



Stainless Steel Wire Mesh five-heddle Weave			
Mesh (inch)	Wire Diameter (mm)	Opening Area (%)	Weight (kg/m <sup>2</sup> )
108 X 59	0.152mm	25	0.97
	0.16mm	20	1.08
110 X 60	0.16mm	19	1.10
38 X 38	0.15mm	61	0.43

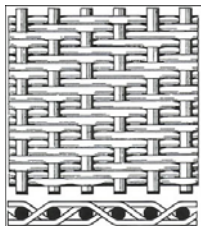


Plain and Twilled Reverse Dutch Weave

Stainless Steel Reverse Dutch Weave			
Mesh (inch)	Wire dia×Wire dia(mm)	Opening (μm)	Weight(kg/m <sup>2</sup> )
48 × 10	0.5 × 0.5	300	3.63
290 × 76	0.09 × 0.19	40	1.27
400 × 120	0.058 × 0.1	30	0.64
625 × 104	0.04 × 0.15	28	0.84

# Sky Mesh Group

Factory direct high quality wire mesh and filtration products



Twill Dutch Weave Pattern

Stainless Steel Wire Mesh Twill Dutch Weave					
Mesh (inch)	Wire dia × Wire dia (mm)	Opening (μm)	Efficient section rate(%)	Weight (kg/m <sup>2</sup> )	Mesh thickness (mm)
20×150	0.45×0.355	101	7.5	6.03	1.02
20×200	0.355×0.28	118	12.1	4.60	0.92
30×250	0.28×0.20	77	11.2	3.42	0.7
40×430	0.18×0.125	63	15.4	2.1	0.44
50×500	0.14×0.112	47	12.5	1.84	0.365
50×600	0.125×0.09	51	17.2	1.48	0.31
70×600	0.122×0.08	28	9.8	1.38	0.27
80×780	0.10×0.071	30	12.2	1.22	0.242
90×760	0.10×0.071	24	9.6	1.39	0.24
100×760	0.10×0.071	20	7.4	1.25	0.242
100×850	0.10×0.063	22	9.6	1.15	0.24
120×400	0.10×0.071	35	12.9	0.86	0.242
120×600	0.10×0.063	29	12.5	0.96	0.226
130×1100	0.071×0.05	17	9.5	0.88	0.17
130×1200	0.071×0.045	18	10.0	0.81	0.162
130×1600	0.063×0.036	21	19.0	0.65	0.135
150×1400	0.063×0.040	16	11.3	0.72	0.143
160×1500	0.063×0.036	15	12.4	0.67	0.135
165×600	0.071×0.050	25	13	0.62	0.171
165×800	0.071×0.040	25	24.1	0.562	0.151
165×1400	0.063×0.040	12	8.6	0.73	0.143
165×1500	0.063×0.036	14	11.2	0.668	0.135
174×1400	0.063×0.040	11	7.4	0.74	0.143
174×1700	0.063×0.032	13	12.9	0.63	0.127
200×540	0.063×0.050	20	9.0	0.57	0.163
200×900	0.063×0.045	14	8.0	0.70	0.153
200×1200	0.063×0.040	13	8.9	0.73	0.142
200×1400	0.063×0.036	-	-	-	-
200×1500	0.056×0.036	9	6.2	0.67	0.128
200×1800	0.050×0.032	10	9.2	0.58	0.114
250×1250	0.056×0.036	10	6.9	0.64	0.112
250×1600	0.050×0.032	8	3.8	0.63	0.114
250×2000	0.040×0.028	8	8.0	0.50	0.096
250×2300	0.040×0.025	9	10.6	0.45	0.090
285×2300	0.036×0.025	7	7.2	0.45	0.086
300×2300	0.036×0.025	6	6.1	0.45	0.086
325×1600	0.036×0.025	10	10	0.38	0.086
325×1900	0.036×0.025	8	8.5	0.43	0.086
325×2300	0.036×0.025	5	5.0	0.46	0.086
350×2300	0.032×0.022	4	4.5	0.40	0.076
400×2700	0.028×0.020	4	4.7	0.36	0.068
500×3500	0.025×0.015	3	4.9	0.30	0.055

**Twill Dutch - Similar to Plain Dutch except woven in the Twill Style. Each wire passes over two wires then under two wires, still utilizing a smaller-diameter shute wire, allowing an even tighter weave and even finer filtration than Plain Dutch Weave.**

# Sky Mesh Group

Factory direct high quality wire mesh and filtration products

## PVC, Teflon Coated Wire mesh



We serve various plastic coated wire meshes. Coating materials include Teflon, PVC, PE, PP. PVC coated welded wire mesh offers strong adhesion and corrosion resistance.

**Material:** Made of superior mild steel wire, stainless steel wire, aluminum alloy wire, epoxy coated after plain weaving or welding. A variety of colors for your choice.

**Features:** Light weight, good flexibility, corrosion and oxidizing resistance, easy cleaning, bright and environmental friendly.

**Application:** Epoxy coated wire mesh products are mainly used in liquid and gas filtration, grading of particles, insect screen etc.



Welded PVC coated mesh



PVC coated steel wire application in air filter

Description PVC Coated Welded Wire Mesh		
Opening		Wire Diameter(BWG)
In inch	In metric unit(mm)	
1/4" x 1/4"	6.4mm x 6.4mm	22,23,24
3/8" x 3/8"	10.6mm x 10.6mm	19,20,21,22
1/2" x 1/2"	12.7mm x 12.7mm	16,17,18,19,20,21,22,23
5/8" x 5/8"	16mm x 16mm	18,19,20,21,
3/4" x 3/4"	19.1mm x 19.1mm	16,17,18,19,20,21
1" x 1/2"	25.4mm x 12.7mm	16,17,18,19,20,21
1-1/2" x 1-1/2"	38mm x 38mm	14,15,16,17,18,19
1" x 2"	25.4mm x 50.8mm	14,15,16
2" x 2"	50.8mm x 50.8mm	12,13,14,15,16

Epoxy Coated Wire Mesh		
Mesh	Wire diameter mm	Size
12 x 12 12 x 14	0.17, 0.19, 0.21, 0.23, 0.25	Width: 2' – 6' Height: 50" – 300"
14 x 14 14 x 16		
16 x 16 16 x 18		
18 x 18 18 x 20		
20 x 20 20 x 22		
22 x 22 22 x 24		

[www.skymeshgroup.com](http://www.skymeshgroup.com) E-mail: [info@skymeshgroup.com](mailto:info@skymeshgroup.com)

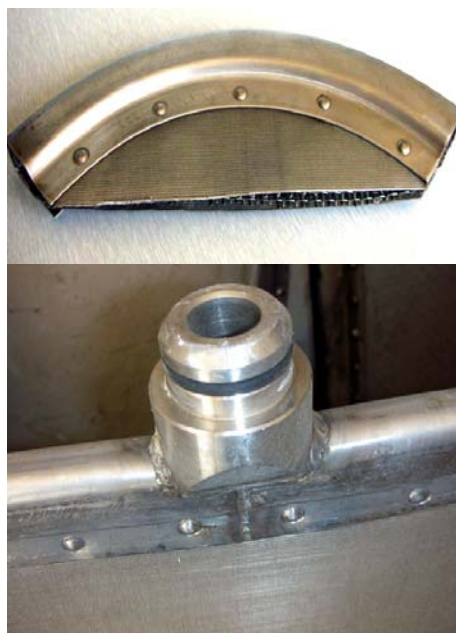
11 Colmar Place, Suite #6, Dundas, ON, L9H4L1, Canada, Tel: 1 866 6750400 Fax: 905 6288140

### Filter Leaf

Filter leaves are designed for batch operation in high flow rates and low solids removal with applications up to 6 wt% solids loadings, depending upon application. All units provide maximum filtrate clarity. Two kinds of filter leaf are available to suit your process requirements:

- Metal Screened Filter Leaves
- Polypropylene Filter Leaves for low temperature or corrosive applications

Sky Mesh Group also provides full filter system including vessels, agitating tanks and accessories.



- \* Three layers Tubular Slit Metal Screen Filter Leaf are constructed with
  - *Drainage layer* - 1 layer of tubular slit mesh
  - *Filtration Media* - 2 layers of screen
- \*\* Three layers Mesh Metal Screen Filter Leaf are constructed with
  - *Drainage layer* - 1 layer of mesh
  - *Filtration Media* - 2 layers of screen
- \*\*\* Five layers Mesh Metal Screen Filter Leaf are constructed with
  - *Drainage layer* - 1 layer of mesh
  - *Drainage and support* – 2 layers of mesh
  - *Filtration Media* - 2 layers of screen

Vertical Pressure Leaf Filters have found wide application for:

- Food & Beverage
- Pharmaceutical Industry
- Wastewater
- Chemical Industry
- Petrochemical Industry
- Rendering
- Chlor-Alkali
- Cooling Water
- Electroplating Industry
- Biologically Active Suspensions

### Vertical Pressure Leaf Filters

Model	Filter area (m <sup>2</sup> )	Filter cake volume (L)	Handling ability (T/h)			Maximum working pressure (MPa)	Operating temperature (°C)	Jar volume (L)	Weight (Kg)	Height (mm)	Area (mm x mm)
			Oil	Resin	Beverage						
NYB-2	2	30	0.4-0.6	1-1.5	1-3	0.5	<150	120	300	1550	620 x 600
NYB-4	4	60	0.5-1.2	2-3	2-5			250	400	1800	770 x 740
NYB-7	7	105	1-1.8	3-6	4-7			420	600	2200	1310 x 1000
NYB-10	10	150	1.6-3	5-8	6-9			800	900	2400	1510 x 1060
NYB-15	15	300	3-5	7-12	10-13			1300	1300	2650	1710 x 1350
NYB-20	20	400	4-6	9-15	12-17			1680	1700	2950	1710 x 1350
NYB-25	25	500	5-7	12-19	16-21			1900	2000	3020	1810 x 1430
NYB-30	30	600	6-8	14-23	19-25			2300	2500	3150	2030 x 1550
NYB-36	36	720	7-9	16-27	23-30			2650	3000	3250	2030 x 1550
NYB-40	40	800	8-11	21-34	30-38			2900	3200	3350	2130 x 1560
NYB-45	45	900	9-13	24-39	36-44			3200	3500	3550	2130 x 1560
NYB-52	52	1040	10-15	27-45	42-51			3800	4000	3670	2230 x 1650
NYB-60	62	1200	11-17	30-52	48-60			4500	4500	3810	2310 x 1750
NYB-70	70	1400	12-19	36-60	56-68			5800	5500	4500	3050 x 1950
NYB-80	80	1600	13-21	40-68	64-78			7200	6000	4500	3210 x 2100
NYB-90	90	1800	14-23	43-72	68-82			7700	6500	4650	3300 x 2200

### Self-cleaning Candle Filter and Elements



Area series (M <sup>2</sup> )	Tube body diameter (mm)	Working pressure (MPa)	Operating temperature (°C)	Nominal filter precision (µm)
0.25 - 100	300, 400, 500, 600, 800, 1000, 1200, 1400, 1600, 1800	0.4	120	1, 5, 10, 15, 25, 40, 50, 65, 75, 80, 100, 120, ...

Sky Mesh Group also provides various filters including:

- \* Automatic plate type hermetic filter
- \* Vertical leaf filter
- \* Horizontal leaf filter
- \* Multifunctional filter
- \* Bag filter
- \* Horizontal paper plate filter
- \* Candle filters



## Pleated Filter Elements



Filter media for Pleated Filter Elements are stainless steel sintered fiber web and stainless steel weaving wire cloth.

Stainless Steel Sintered Fiber Web is a kind of durable and pleatable 316L stainless steel medium, sintered into a graded pore structure, enjoys the advantages of high porosity rate, more filtration area, high dirt holding capacity and can be repeatedly used.

Stainless Steel Woven Wire Cloth is made by weaving of stainless steel wire in a variety of diameters. Filter elements with stainless steel woven wire cloth as filter medium, enjoy such advantages of good strength, fastness, easily cleanable, heat-resistance and economic cost.

Pleated Filter Elements mainly serve in filtration of high molecular polymer, long fiber, short fiber, meltdown in thin film production, also drugs, hydraulic oil, disposal of water, hot gas, etc.

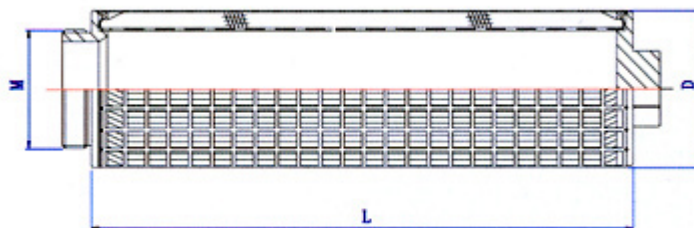
Absolute Rating (μm)	Bubble Point Pressure (Pa)	Average Air Permeability (l/dm <sup>2</sup> /min)	Thickness (mm)	Weight (g/m <sup>2</sup> )	Porosity (%)	Dirt Holding Capacity (mg/cm <sup>2</sup> )
3	12300	9	0.35	975	65	6.40
5	7600	34	0.34	600	78	5.47
7	5045	57	0.27	600	72	6.47
10	3700	100	0.32	600	77	7.56
15	2470	175	0.37	600	80	7.92
20	1850	255	0.49	750	81	12.44
25	1480	320	0.61	1050	79	19.38
30	1235	455	0.63	1050	79	23.07
40	925	580	0.66	1200	77	25.96
60	630	1000	0.70	750	87	33.97

# Sky Mesh Group

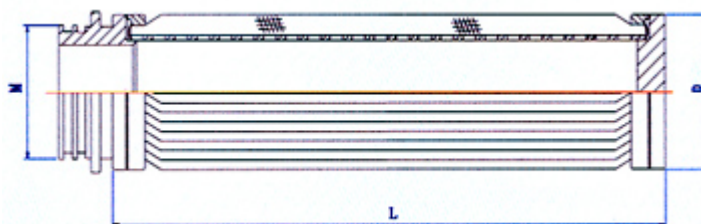
Factory direct high quality wire mesh and filtration products

## Pleated Filter Elements Series

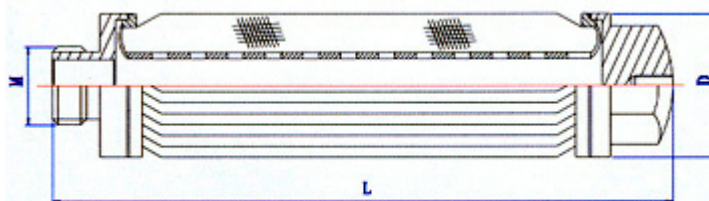
Filter Element Model: PF-D/L-R  
 PF-Pleated Filter Elements  
 D-Diameter  
 L-Length  
 R-Filter Rating



Model	L(mm)	D(mm)	M	Filter Area	R(μm)	Filter Media
PF-86/200-R	200	86	M65x2P	0.20M <sup>2</sup>	3, 5, 7, 10, 15, 20, 25, 30, 40, 60, 75	Stainless steel sintered fiber web; stainless steel weaving wire cloth
PF-86/350-R	350			0.35M <sup>2</sup>		
PF-86/500-R	500			0.50M <sup>2</sup>		
PF-100/800-R	800	100	M80x2P	1.00M <sup>2</sup>		



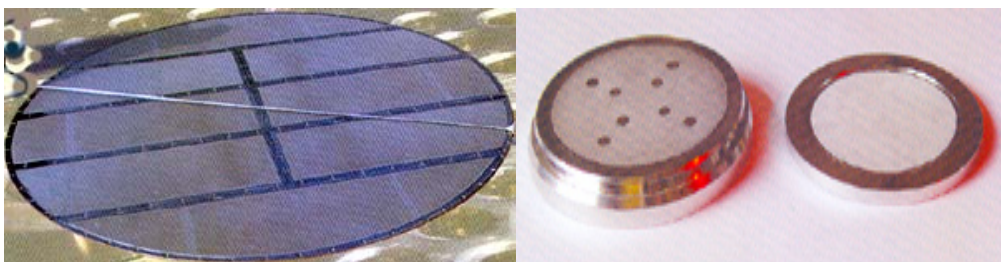
Model	L(mm)	D(mm)	M	Filter Area	R(μm)	Filter Media
PF-65/250-R	250	65	226 223	0.135M <sup>2</sup>	3, 5, 7, 10, 15, 20, 25, 30, 40, 60, 75	Stainless steel sintered fiber web; stainless steel weaving wire cloth
PF-65/500-R	500			0.38M <sup>2</sup>		
PF-70/750-R	750	70	220 215	0.42M <sup>2</sup>		
PF-70/750-R	750	70		0.60M <sup>2</sup>		



Model	L(mm)	D(mm)	M	Filter Area	R(μm)	Filter Media
PF-35/102-R	102	35	M18 M20x2.5 M20x1.5 NPT1" 3/4-16	0.026M <sup>2</sup>	3, 5, 7, 10, 15, 20, 25, 30, 40, 60, 75	Stainless steel sintered fiber web; stainless steel weaving wire cloth
PF-35/207-R	207			0.07M <sup>2</sup>		
PF-35/210-R	210			0.07M <sup>2</sup>		
PF-35/242-R	242			0.08M <sup>2</sup>		
PF-35/425-R	425			0.15M <sup>2</sup>		
PF-35/485-R	485			0.20M <sup>2</sup>		

And more..

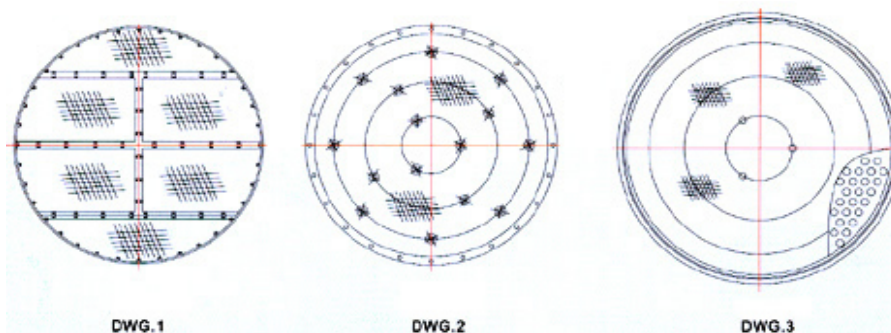
## Disc Filters



**Filter Media:** Filter medium for Disc Filters is multi-layer sintered wire cloth, with a rating range from 0.5 to 200micron, in a diameter from 200mm to 3000mm. Disc filters with multi-layer sintered wire cloth as filter medium, enjoy good strength, accurate filter rating, long life-span and repeatedly cleaning.

**Materials:** Standard material of disc filters is SUS316L. Other metals like Nickel alloy or Titanium alloy are also available at customers request.

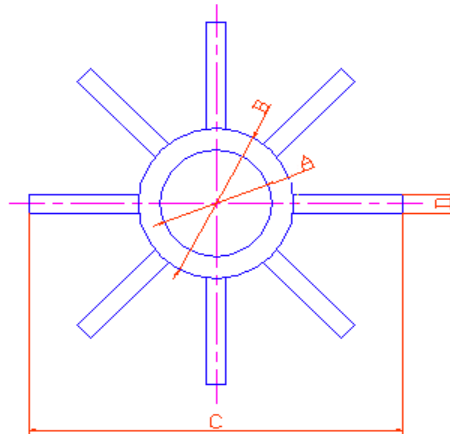
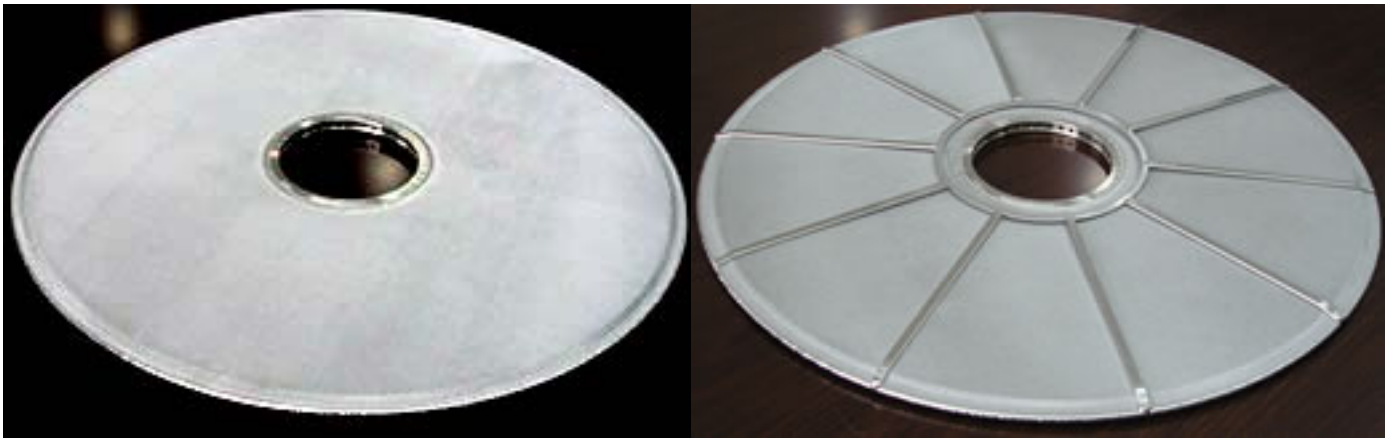
**Application:** Disc filters are ideal filter fittings for three-in-one filtration ( filtering, washing and drying ) in pharmaceuticals, food, chemical industries and polymers. Disc filters work as a complete unit or in parts.



Model	Diameter (mm)	Filter Area	Filter Rating (µm)	Filter Media	Structure
DF-600-R	600	0.28M <sup>2</sup>	5, 10, 15, 20, 30, 40, 60	Stainless steel multi-layer sintered wire cloth in thickness: 1.7mm 2.5mm 3.5mm	DWG.1 Combined type: Filter sheet and supporting sheet are welded together, then each unit is connected with bolts.  DWG.2 Monoblock type: Filter sheet is connected to supporting sheet with bolts or welded together, then welded with flange.  DWG.3 Monoblock type: Filter sheet is directly sintered with perforated sheet, then welded with flange.
DF-800-R	800	0.50M <sup>2</sup>			
DF-1000-R	1000	0.79M <sup>2</sup>			
DF-1200-R	1200	1.13M <sup>2</sup>			
DF-1600-R	1600	2.01M <sup>2</sup>			
DF-1800-R	1800	2.54M <sup>2</sup>			
DF-2000-R	2000	3.14M <sup>2</sup>			
DF-2300-R	2300	4.15M <sup>2</sup>			
DF-2400-R	2400	4.52M <sup>2</sup>			
DF-2600-R	2600	5.31M <sup>2</sup>			
DF-2750-R	2750	5.94M <sup>2</sup>			
DF-2800-R	2800	6.15M <sup>2</sup>			
DF-3000-R	3000	7.06M <sup>2</sup>			

## Disc Filters II

Leaf filter is mainly used in filter devices of high viscosity melt for removing of hard impurities. The materials are stainless steel sintered web and stainless steel sintered wire mesh. Leaf filters can be repeatedly used and repeatedly cleaned.

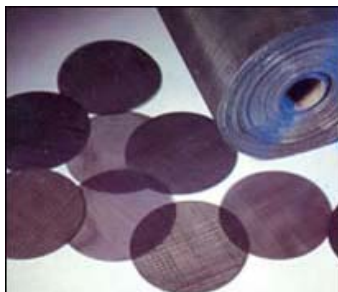


Type	Size (mm)			
	A	B	C	D
LF-111-R	50	57	111	3
LF-149-R	50	57	149	3
LF-177-R	60	67	177	3
LF-177-R	77	84	177	3
LF-222-R	60	67	222	3
LF-222-R	77	84	222	3
LF-304-R	77	84	304	3

## Filter Packs and Basket



Double layer PS wire mesh disc



Plain steel wire mesh

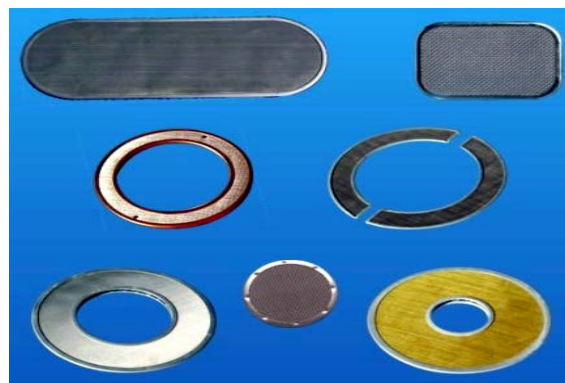


Stainless steel mesh disc

**Filter Media:** Filter media for Filter Cloth Packs include stainless steel sintered fiber web, stainless steel weaving wire mesh, phosphate copper wire mesh and copper wire mesh.

**Shapes & Lining:** Filter cloth packs can be single or multi-layered. Filter cloth packs come in different shapes, including round, square, oval and kidney-shaped. Lining material can be aluminum, stainless steel, nickel coated copper, etc.

**Application:** Filter Cloth Packs are mainly used in filtration of polyester film and spinning in chemical fiber industry.



Filter Cloth Packs



Basket filters

**Filter Media:** Filter media for basket filters include stainless steel perforated sheet, stainless steel weaving wire mesh and stainless steel sintered wire cloth. As to external dimensions and filter rating, we may also provide products per customers requirements.

**Application:** Basket filters are mainly used in such industries as petroleum, chemical industry, food, beverage, water treatments, etc.

## Filter Cloth

We offer a full range of non-woven, woven and felted synthetic filter cloth including: woven constructions of monofilament, spun, multifilament, combination yarns and needle felts with various surface finishes. Weave designs, fibre choice and special finishing techniques are used to enhance the filtration and cake release characteristics of our materials.



**Fiber Material**

PA6, PA6.6, PA11, PP, PET

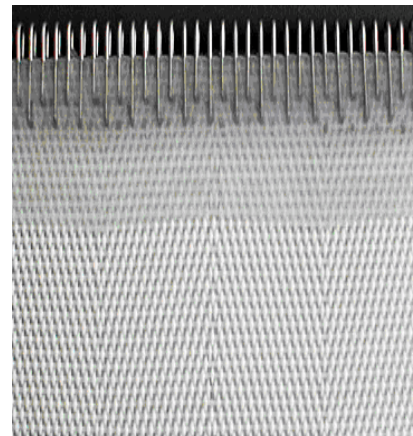
**Benefits**

high dimensional stability good  
abrasion resistance clogging  
prevention smooth surface  
excellent cake release

**Applications**

belt filter  
filter press  
vacuum pan filter  
leaf filter  
rotary / horizontal disc filter  
rotary drum vacuum filter  
centrifuge filter

**Monofilament Filter Cloth**



Monofilament filter cloth is made from monofilament yarn. Benefit from its excellent performance, it has been widely used for industrial solid/liquid filtration.

### Monofilament Filter Cloth

Model	Material	Weight (g/m <sup>2</sup> )	Thickness (mm)	Air permeability (l/m <sup>2</sup> .s)	Density (pcs/10cm)		Breaking strength (N/5x20cm)		Elongation		Weave
					Wrap	Weft	Wrap	Weft	Wrap	Weft	
PA58 15	PA6	540	0.85	818	788	228	5340	2258	28.7	24.6	twill
PA23 13	PA66	355	0.64	2873.28	482	191	3860	1630	35.4	25.5	Satin
PA51 33	PA6	590	1.00	619.40	914	319	7304	2550	37.8	26.5	double layer
PA53 18	PA6	395	0.79	1195.72	1070	295	5570	1870	35.4	24.4	
PA22 13	PA6	280	0.52	2268.36	409	240	3111	1825	25.8	24.2	
PA28 12	PA6	360	0.72	2204.48	492	185	3937	2165	31.3	24.4	
	PA6	360	0.65	2239.12	482	185	3858	2165	33.5	25.8	
PA	PA66	350	0.54	1143.16	472	236	3780	2456	33.5	25.6	

### Polypropylene Filter Cloth



Model	Weight (g/m <sup>2</sup> )	Thickness (mm)	Air permeability(l/m <sup>2</sup> .s)	Density (pcs/10cm)		Breaking strength (N/5x20cm)		Elongation	
				Wrap	Weft	Wrap	Weft	Wrap	Weft
8005	308.74	0.61	19.30	173.2	102.4	3337.4	2759	41.63	30.9
8006	390.58	0.72	12.56	204.7	110.2	4356.7	2760	42.57	29
8007	443.10	0.75	13.29	236.2	108.3	4380.7	2776	42.87	26
8057	456.34	0.77	15.50	255.9	106.3	4400.7	2766	42.90	26.5
8008	462.53	0.78	13.11	271.7	94.5	4426.7	2406	41.53	26.9
8010	523.57	0.93	10.18	330.7	90.6	5825	2270	55.67	33.7
8507	462.04	0.84	42.52	248.0	137.8	4491.4	3933	50.63	34.07
8508	470.89	0.86	36.97	275.6	129.9	5258.2	4221	46.87	35.53
8509	517.51	0.98	27.23	307.1	131.9	5625	4870	54.67	34.8
5510	379.07	0.70	45.02	330.7	189.0	2600	2050	44.7	28.87
TPA	408	0.76	72.79	348.4	122.0	5168.2	5077.	5183	37.37
BB	668	1.13	44.15	582.7	110.2	10115	3030	35.03	30.57

### Polyester Filter Cloth

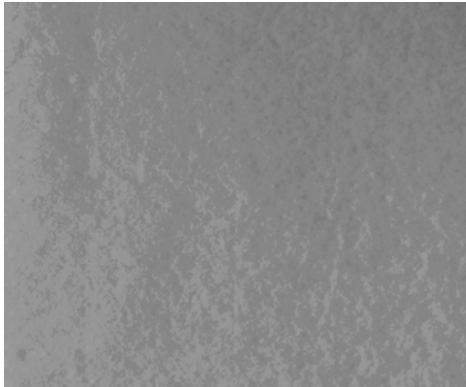
Technical Specifications (We can custom the products according to your specifications.)

Model	Weight (g/m <sup>2</sup> )	Thickness (mm)	Air permeability(l/m <sup>2</sup> .s)	Density (pcs/10cm)		Breaking strength (N/5x20cm)		Elongation	
				Wrap	Weft	Wrap	Weft	Wrap	Weft
120-7	627.6	1.42	53..9	256.4	212	4498	4044	36.3	27.5
734	245.9	0.62	316	231.6	168	2072	1633	25.6	23.2
747	248.2	0.53	107.9	226	159	2026	1485	35.6	20.5
758	330.5	0.73	55.4	194	134	2594	1909	44.2	21.3
3927	524.1	0.9	<20.7	152	102	4598	3154	46.8	24.8
208	410.8	1.43	68	271	286	2788	1930	39.1	29
729	310	0.72	119.2	300.8	202	3180.7	2157	23.1	21.2
740	324.6	0.71	126.7	306	206.2	3175.8	2184	23.5	21.3
120-7	627.6	1.42	53..9	256.4	212	4498	4044	36.3	27.5
734	245.9	0.62	316	231.6	168	2072	1633	25.6	23.2

## Needle Felt

Needle felt is the main material of liquid filter bag and dust filter bag.

The fiber ranges include PET, PP, fiberglass, NOMEX, FMS, PPS, P84 and PTFE.



Model	Material	Weight (g/m <sup>2</sup> )	Thick-ness (mm)	Air permea-bility (l/m <sup>2</sup> .s)	Breaking Strength (N/5x20cm)		Elongation (%)		Working Temperature	
					Wrap	Weft	Wrap	Weft	Peak.	Cont.
PET felt	PET	500	1.8	200-350	1000	1100	<35	<40	120	150
PP felt	PP	600	2.2	100-200	1200	1800	<50	<55	90	110
Hydro & oleophobic felt	PET	500	2.0	150-300	1200	1300	<30	<45	120	150
Antistatic felt	PET Conductive fiber	500	1.8	200-350	900	1000	<35	<30	120	150
Easy-cleaning felt	PET	500	1.8	200-350	1300	1400	<35	<55	120	150
Acrylic felt	Acrylic	500	2.0	180-250	1200	1300	<20	<45	140	160
PTFE membrane felt	PET PTFE	500	1.8	30-60	1000	1100	<37	<35	130	160

## Spunbonded Non-Woven Fabrics



**Properties:**

Material: PET, PP

The maximum width after cutting edge: 3200mm

The maximum roll diameter: 1500mm

Range of g/m<sup>2</sup>: 10 – 260g/m<sup>2</sup>

Color: on customer's request

ITEM NO.	BASIC WEIGHT(g/m <sup>2</sup> )	THICKNESS (mm)	TENSILE STRENGTH (N/50mm)		ELONGATION (%)		THERMAL SHRINKAGE
			MD	CD	MD	CD	
PETSS 015	15	0.09	>30	>10	<18	<18	<2%
PETSS 020	20	0.12	>45	>20	<22	<22	<2%
PETSS 025	25	0.14	>70	>30	<23	<23	<2%
PETSS 030	30	0.16	>90	>45	<26	<25	<2%
PETSS 040	40	0.20	>110	>50	<27	<27	<2%
PETSS 050	50	0.24	>180	>55	<27	<29	<2%
PETSS 060	60	0.25	>210	>75	<25	<25	<2%
PETSS 070	70	0.29	>250	>88	<31	<31	<2%
PETSS 080	80	0.31	>270	>100	<30	<31	<2%
PETSS 100	100	0.32	>290	>102	<27	<30	<2%

## Liquid Filtration and Dust Collector Filter Bag



Liquid Filter Bag

Liquid filter bags are widely used as the filter media in applications of liquid filtration. They are produced of fabrics, needle felts and nylon mesh in different fineness according to your filtration process. We can provide custom bags to meet your specific requirements. Our product lines mainly include: Felt Filter Bag and Mesh Filter Bag



Dust Collector Filter Bag

Dust collector filter bag provides a cost effective solution for many industrial operations. It is highly versatile and efficient in dust and fume collection.

We provide a wide variety of filter bags for use mainly in the following types of dust collectors: Pulse Jet Dust Collector, Reverse Air Dust Collector, Mechanical (Shaker) Dust Collector and Baghouse Dust Collector.



Mesh Filter Bag

Mesh filter bags are constructed with woven fabric. Whether your application requires a monofilament mesh that provides extra strength with no fiber migration, or a multifilament mesh designed for low-cost, disposable bags, we have your needs covered. Material available: nylon monofilament, polyester multifilament, polypropylene Monofilament. Micron rating: 10 to 1000; Collar type: steel ring, plastic ring or loop.

[www.skymeshgroup.com](http://www.skymeshgroup.com) E-mail: [info@skymeshgroup.com](mailto:info@skymeshgroup.com)

11 Colmar Place, Suite #6, Dundas, ON, L9H4L1, Canada, Tel: 1 866 6750400 Fax: 905 6288140